

# Marlena Lyras-Hull

Interior Designer

## Hello, I'm Marlena

I am an enthusiastic and self-motivated designer with a strong understanding of client needs, functionality, and creating personalised spaces.

Producing consistently high, professional standards of work is essential to me, and I enjoy working with creative, like-minded individuals with whom I can share my excitement and passion for interior design.

## EXPERIENCE

### 2018 - Present **Country Coordinator, STEPtember Cerebral Palsy Alliance**

- Coordinate International STEPtember campaigns
- Provide (weekly) reporting for year on year performance during campaign months
- Implement Web page content updates and test functionality changes for the following year's campaign
- Implement Web page content updates and test functionality changes for the following year's campaign

### 2011 - 2017 **Marketing Campaign Manager Ricoh Australia**

- Managed marketing campaigns for Production Print department
- Created and presented weekly and monthly Executive reports
- Organised promotional events
- Produced YOY growth for Production Print sales

### 2009 - 2010 **Group Marketing Events Coordinator Expertise Events**

- Coordinated International and interstate exhibition events
- Managed Guild Associations and participation
- Coordinated event exhibitors and sales

## REFEREES

**Tanja Voss** | Senior Manager Campaigns, Cerebral Palsy Alliance  
tanja.voss@cerebralpalsy.org.au | 02 9975 8046

**Lucy Jacka** | General Manager Fundraising, Cerebral Palsy Alliance  
ljacka@cerebralpalsy.org.au | 0438 003 170

**Daniel Staebe** | Course Coordinator, Billy Blue College of Design, Torrens University  
dstaebe@torrens.edu.au



## CONTACT

0438 494 815

contact@eyedesigninteriors.com.au

eyedesigninteriors.com.au

## EDUCATION

### **Bachelor of Interior Design (Commercial)**

Billy Blue College of Design |  
Torrens University  
2020 - 2022

### **Diploma of Interior Design and Decoration**

Billy Blue College of Design |  
Torrens University  
2019

### **Bachelor of Arts (Graphic Design) | Bachelor of Business Studies**

Charles Sturt University  
2014 - 2018

### **Bachelor of Media Communication**

Charles Sturt University  
2008 - 2010

## EXPERTISE

- Revit
- AutoCAD
- 3ds Max
- SketchUp
- Enscape
- Adobe Creative Suite

**Marlena Lyras-Hull**  
Interior Designer

0438 494 815

contact@eyedesigninteriors.com.au

eyedesigninteriors.com.au

## PROJECT DETAILS

### Client

Maggie Beer

### Project Brief

Cafe proposal and development

### Location

50 Pheasant Farm Rd, Nuriootpa SA

### Date

2022

## PROJECT

Maggie Beer has been creating her simple yet incredible farm-to-table cuisine for the past few decades and has always been an advocate for fresh, organic, wholesome food.

In conjunction with Maggie's Wellbeing Gardens Program which she started back in 2015, Maggie Beer's Wellness Gardens Cafe & Bar was designed where she can utilise the fresh produce grown on her farm as well as her range of products to create appetising dishes and educate people on the benefits of cooking with ingredients straight from the garden.

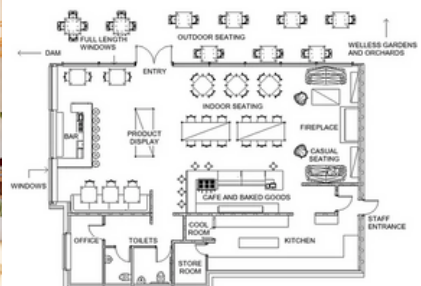
These design elements reflect the colours that exist in nature along with an abundance of natural light flowing into the interior space.

The use of plants and natural organic materials was the key to creating an ambiance that is refreshing, eco-friendly, and exudes a sense of wellness and a feeling of connectivity with a blending of the interior and exterior spaces.

## SOFTWARE

- Revit
- Enscape

# Maggie Beer's Wellness Gardens Cafe & Bar



**Marlena Lyras-Hull**  
Interior Designer

0438 494 815

contact@eyedesigninteriors.com.au

eyedesigninteriors.com.au

## PROJECT DETAILS

### Clients

Laura Sampredo & Carlos Alija

### Project Brief

Luxury two-storey apartment design

### Location

14 Blues Point Road, McMahon's Point NSW

### Date

2021

## PROJECT

The Blues Point apartment located in McMahon's Point was designed with luxury in mind.

With views to the expansive easterly views of the Sydney Harbour and city skyline, the open-plan design enables a range of vision of this outlook from all areas of the apartment.

The overall space is a homage to contemporary design, with its simplicity, subtle sophistication, and deliberate use of texture and clean lines.

The colour palette is strong yet neutral, emphasising tones of greys, beiges and shades of white, with distinctive pops of chocolate injected throughout, connecting all areas together.

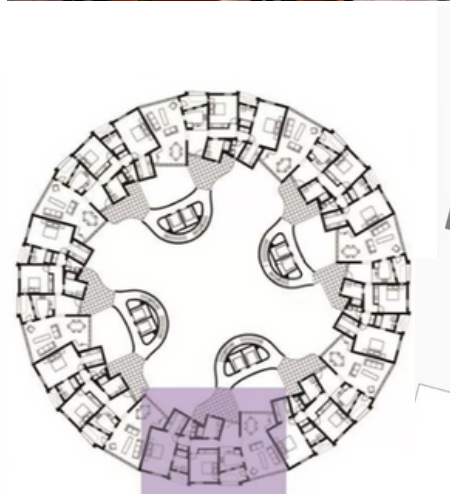
The lower level, features a stone fireplace and a generous living area which flows through to a modern and streamlined kitchen, as well as a master bedroom with its own luxurious ensuite and walk-in wardrobe, all with views to the harbour.

The sleek white staircase connects the upper level which encompasses a second spacious lounge area, alongside a hidden wine and bar station which overlooks a sizeable study area and a second bedroom and ensuite.

## SOFTWARE

- Revit
- Enscape
- Photoshop

# Blues Point Apartment



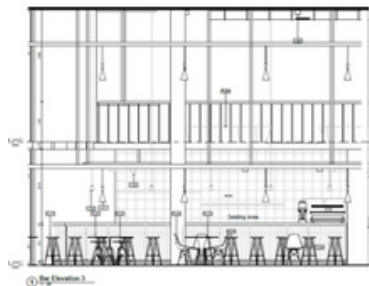
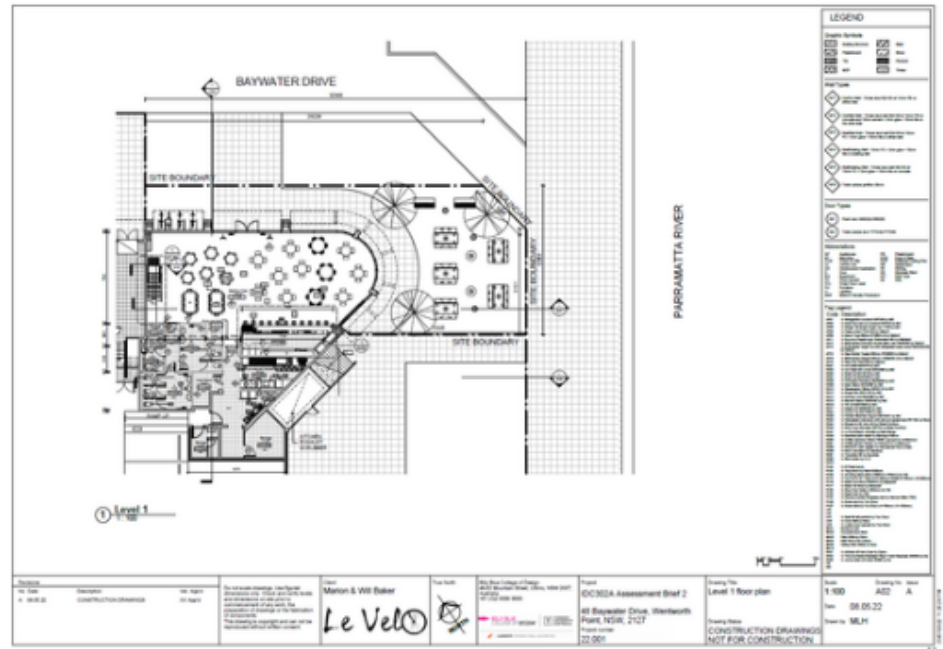
**Marlena Lyras-Hull**  
Interior Designer

0438 494 815

contact@eyedesigninteriors.com.au

eyedesigninteriors.com.au

# Le Velo Cafe



## PROJECT DETAILS

**Client**  
Le Velo Cafe

**Project Brief**  
Comprehensive documentation for  
Le Velo Cafe

**Location**  
48 Baywater Drive, Wentworth Point NSW

**Date**  
2022

## PROJECT

Le Velo Cafe was designed as a hot spot for cyclists and food lovers alike.

This cafe has an industrial vibe with added splashes of colour to liven up the space.

The ground floor of the cafe not only includes spacious indoor and outdoor seating and dining areas, but it also features a large fully equipped bar.

Customers venturing up the custom-built staircase will also find an exhibition area with additional seating which overlooks the cafe, as well as a bicycle workshop for those quick repairs whilst enjoying a bit to eat.

## SOFTWARE

- Revit
- Enscape

**Marlena Lyras-Hull**  
Interior Designer

0438 494 815

contact@eyedesigninteriors.com.au

eyedesigninteriors.com.au

## PROJECT DETAILS

**Client**  
SurfStitch

**Project Brief**  
Interior design and decoration of a two-storey retail and office space

**Location**  
Union Bond Store  
47 George Street, The Rocks NSW

**Date**  
2020

## PROJECT

A mix of industrial and coastal design was applied to the SurfStitch retail design.

An abundance of display areas surround an open cafe and bar, inviting customers to remain in the store much longer whilst enjoying a coffee.

The changerooms are hidden at the rear of the store behind a large super-screen displaying scrolling surfing images, and the POS is conveniently located right next to the changerooms so that customers can simply try and buy.

Upstairs is an office space for the retail and corporate staff to use, which includes a spacious and modern staff kitchen, several hotdesks for corporate staff on the go.

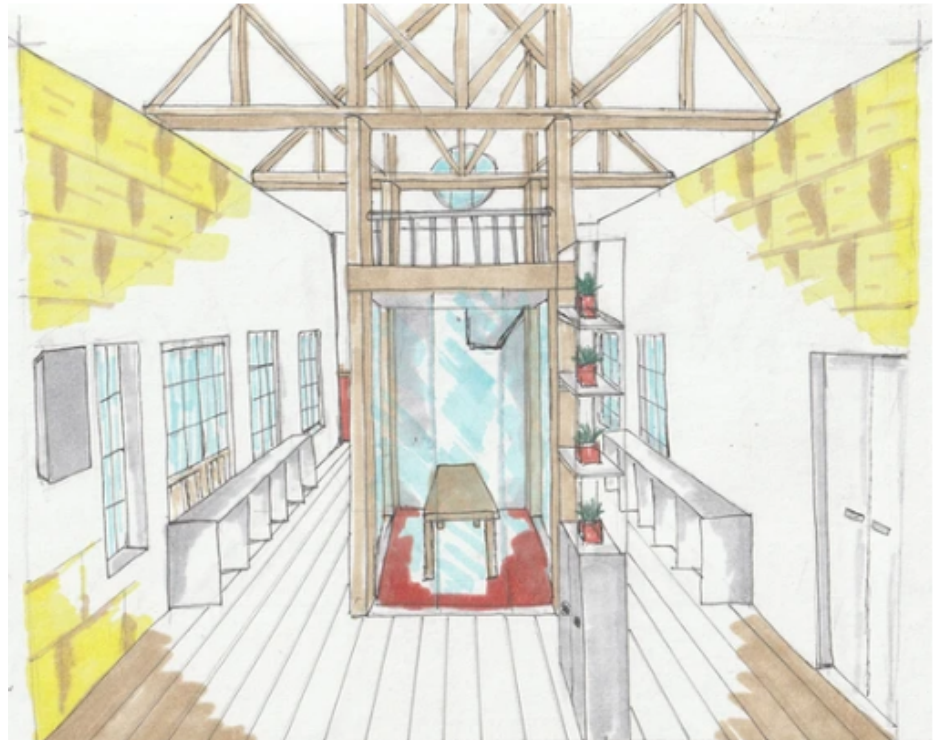
The main feature is a central meeting room encased in glass sliding doors which open up when more space is required, and above this meeting room is a mezzanine area for staff to enjoy a time-out.

## SOFTWARE

- AutoCAD
- SketchUp
- Vray
- Photoshop

# SurfStitch

## Retail & Office Space



**Marlena Lyras-Hull**  
Interior Designer

0438 494 815

contact@eyedesigninteriors.com.au

eyedesigninteriors.com.au

## PROJECT DETAILS

**Client**  
Disney Corporation

**Project Brief**  
Interior design and decoration of the Disney Corporation office space and Reception desk design

**Location**  
1 Bligh Street, Sydney NSW

**Date**  
2021

## PROJECT

Colour was the inspiration for this office design for Disney Corporation.

Keeping in line with the bright colours of the Disney characters, every colour of the rainbow has made a mark in this space, including meeting rooms catering to specific Disney characters such as Mickey Mouse, Donald Duck, and Goofy, to name a few.

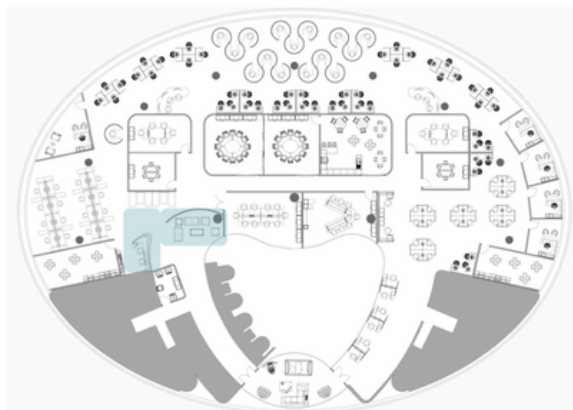
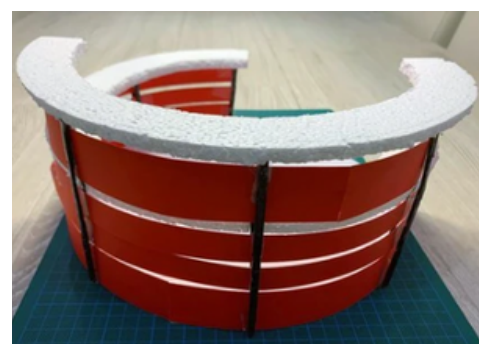
Next to the custom-built Reception desk is a suite of brightly coloured seating for guests that have been strategically placed underneath the large multi-coloured Disney logo.

The office area has been designed to ensure that no matter which desk a staff member sits at, they will be able to enjoy the 180-degree panoramic city views, and there is also a bonus break-out room for staff to take some time out from their busy schedules.

## SOFTWARE

- AutoCAD
- Revit
- Enscape
- Photoshop

# Disney Office Space



**Marlena Lyras-Hull**  
Interior Designer

0438 494 815

contact@eyedesigninteriors.com.au

eyedesigninteriors.com.au

## PROJECT DETAILS

### Client

IGA Supermarket

### Project Brief

Re-design of the interior of a local IGA supermarket

### Location

15 Grigor Place, Allambie Heights NSW

### Date

2021

## PROJECT

IGA stores are well known for being independently owned, usually by generations of families, as well as their support of local communities, suppliers and charities, with a very appropriate slogan of “Where the locals matter”, and this store is no exception.

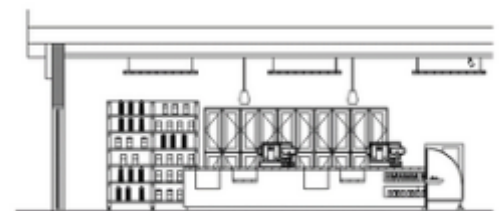
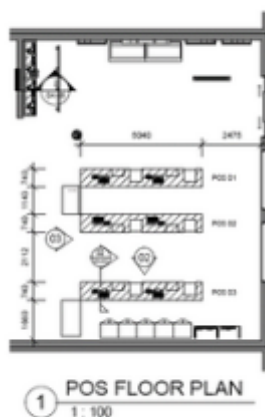
Located on the Northern Beaches of Sydney, this store captures the essence of the coast with its casual design, exuding a warm and personal look and feel.

This open-plan space enables customers to shop with ease, with various touchpoints in the store including a wall herb garden, providing customers with an engaging and memorable experience, inviting them to come back.

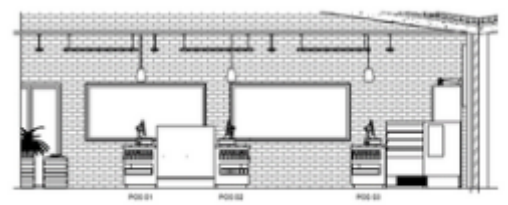
## SOFTWARE

- AutoCAD
- Revit
- Enscape
- Photoshop

# IGA Supermarket



2 POS ELEVATION 1  
1:50



3 POS ELEVATION 2  
1:50